

Need a Mortgage in principle
to make offers? Call us now
for quick assistance!
0121 775 0101



Do you need to sell?
Start your journey now!
Call us we can help.
01564 777 314



SCAN FOR MORE INFO
SIZE - Sq Ft
TENURE - Freehold
COUNCIL TAX - Solihull Metropolitan Borough Council - E.
BROADBAND - Upload Max 220Mbps
Download Max 1800Mbps
MOBILE - EE - 74%, O2 - 78%, 3 - 72%, Vodafone - 76%
EPC - C - 70
PARKING - Ample Driveway Parking
FLOODRISK - Very Low
SERVICES - Mains
COVENANTS - N/A

Are you an investor
interested in expanding your
portfolio?

**Call 01564 777 314 to provide your
investment criteria for alerts.**

16 Park View

Hockley Heath, B94 6PH

Located in the charming area of Park View, Hockley Heath, this delightful four-bedroom detached house offers a perfect blend of comfort and convenience. With direct access to the picturesque Hockley Heath Park, this property is ideal for families and nature enthusiasts alike.

FEATURES

- Extended Detached Family Home
- Bright Living Room with Stairs to First Floor
- Stunning Conservatory
- Separate Dining Room
- Fitted Kitchen with Side Utility
- Principal Bedroom with Fitted Wardrobes
- Three Further Good Sized Bedrooms
- Four Piece Family Bathroom
- Private Rear Garden with Access to Hockley Heath Park
- Driveway Parking for Numerous Vehicles & Tandem Length Garage



SCAN TO **VIEW OUR**
WEEKLY FILMS &
SUBSCRIBE

Sneak Peeks

Every week, we unveil "Sneak Peeks," a feature showcasing exclusive properties before they hit Rightmove and other platforms.

The Landlord Club

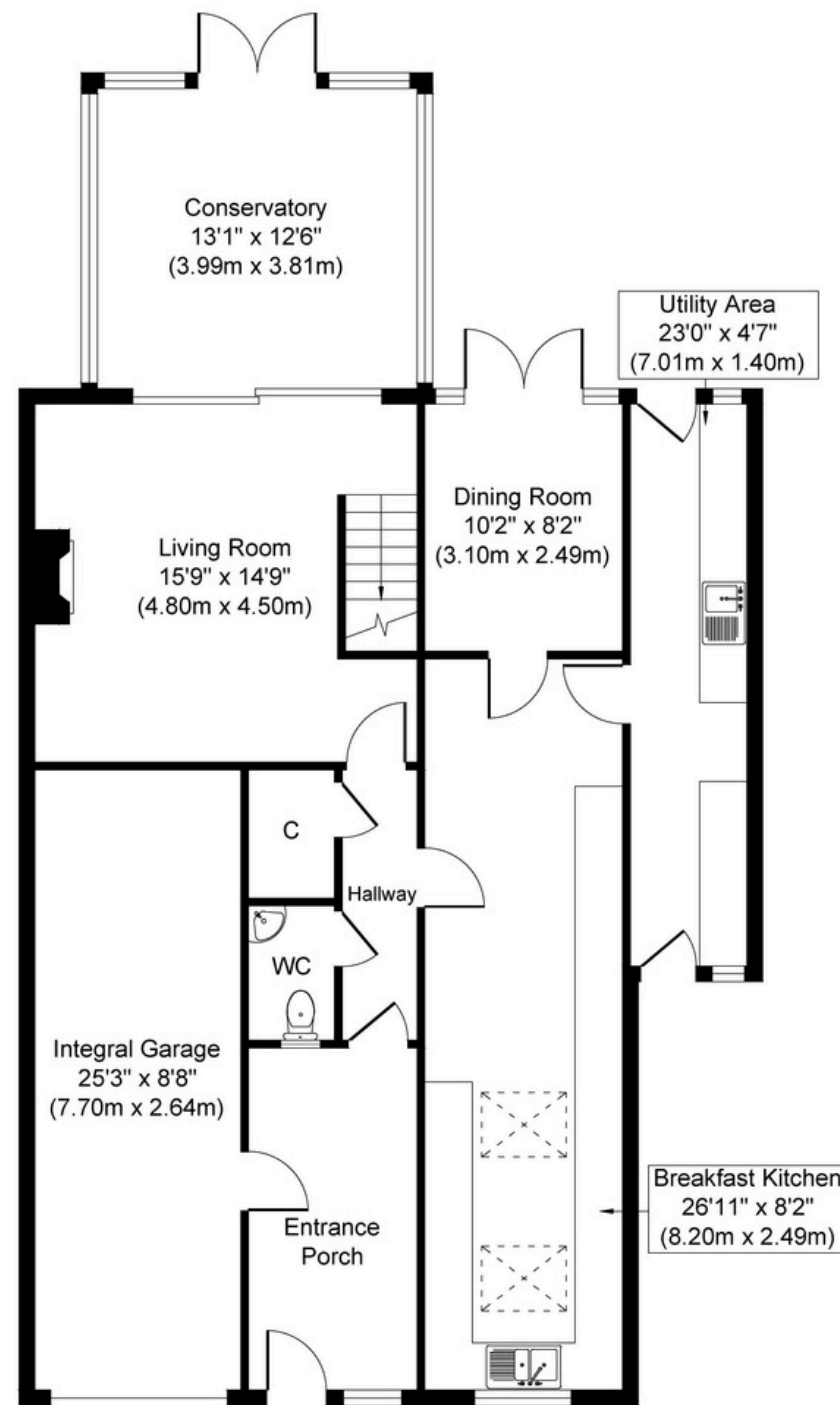
Join our Landlord Club for weekly updates on legislation, market trends, and our Letting Director's 'Investment Pick of the Week' for optimal ROI.

HTSPMD

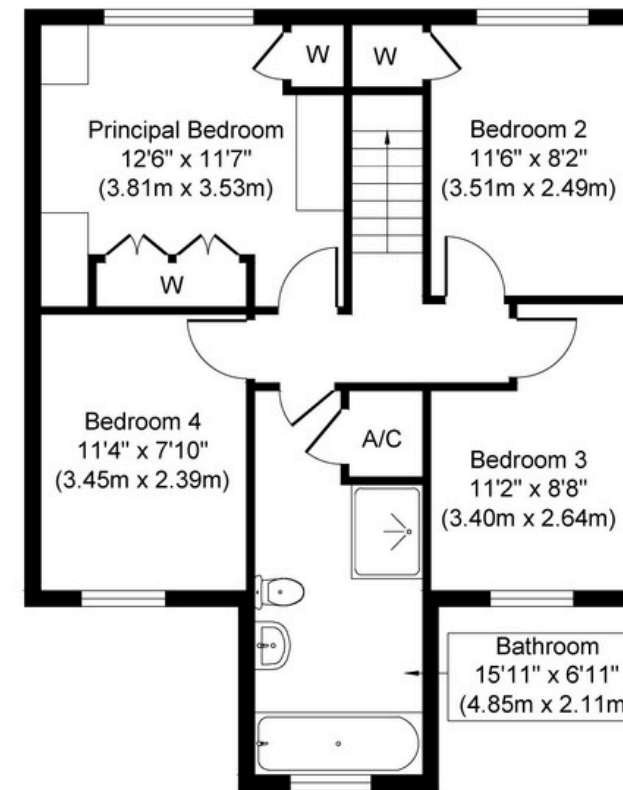
Tune into 'How's The Solihull Property Market Dom' weekly for a quick, insightful snapshot of the market.

The Mortgage Update

Get weekly insights and the best deals with our Mortgage Update, your shortcut to navigating the complex mortgage landscape confidently.



Ground Floor
Approximate Floor Area
1294 sq. ft
(120.25 sq. m)



First Floor
Approximate Floor Area
627 sq. ft
(58.24 sq. m)

Whilst every attempt has been made to ensure the accuracy of the floor plan contained here, measurements of doors, windows, rooms and any other items are approximate and no responsibility is taken for any error, omission, or mis-statement. The measurements should not be relied upon for valuation, transaction and/or funding purposes. This plan is for illustrative purposes only and should be used as such by any prospective purchaser or tenant.

The services, systems and appliances shown have not been tested and no guarantee as to their operability or efficiency can be given.